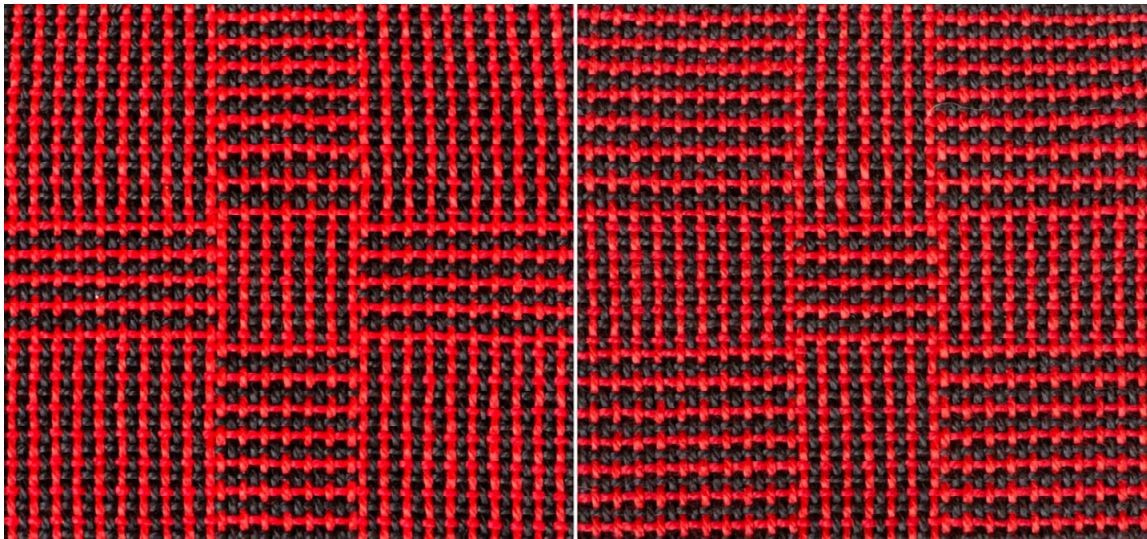
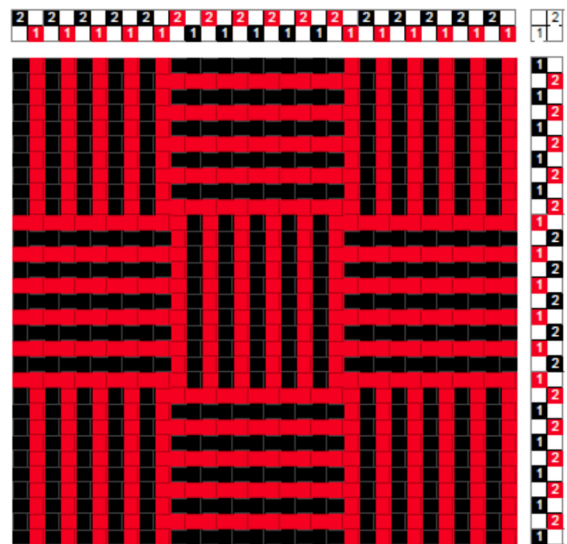
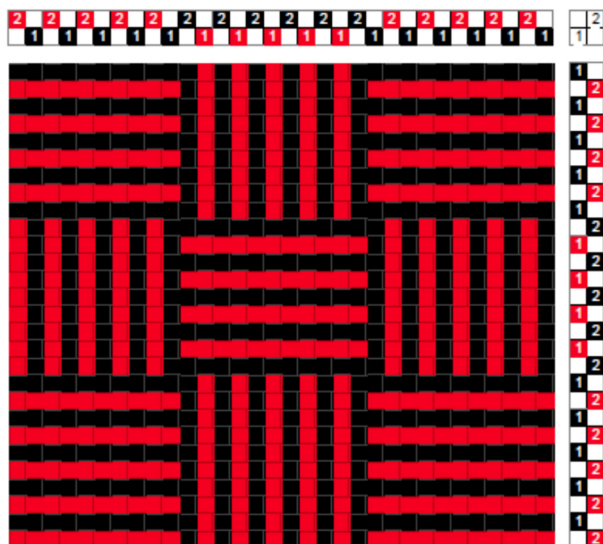


Log Cabin

Log cabin is a color-and-weave effect which is woven either on plain weave or on basket weave. Two contrasting colors are used in the warp and the same two colors in the weft. Because of the color interactions, the underlying weave structure is not noticeable, but the motif with horizontal and vertical stripes becomes obvious.



Above is the front (left) and back (right) of a plain weave log cabin, woven with the drawdown on the right. The direction of the stripes changes width-wise when the warp colors are changed; length-wise when the weft colors change.



In this particular fabric, all of the color exchanges occur with red, which results in the blocks being framed in red. On the left is a drawdown showing framing in black as a result of the black color changes.